



# MOTORCYCLE DOCTOR LLC

**Craig Silvers,**  
Owner

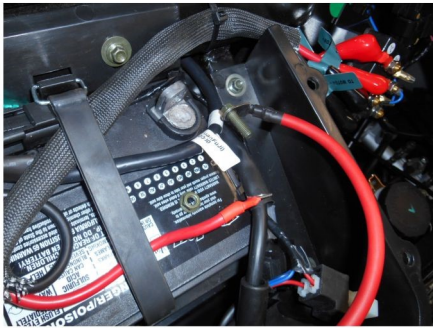
PO Box 1676 / 108 N. Business Rt. 5 Camdenton, Mo 65020  
(573) 346-6867

Date: 08-23-18

web site: [www.MotorcycleDoctor.com](http://www.MotorcycleDoctor.com)

email: [Craig@MotorcycleDoctor.com](mailto:Craig@MotorcycleDoctor.com)

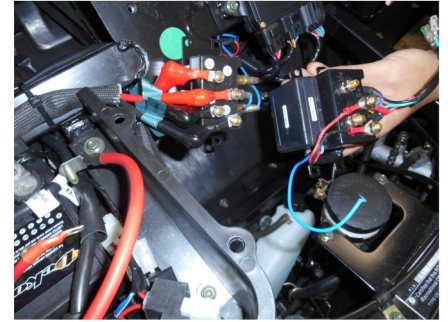
## Wireless Winch Controller



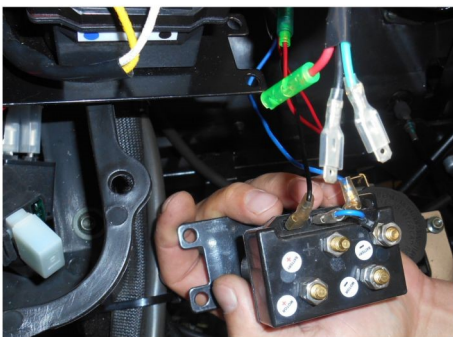
1. Remove Positive from Battery Post.



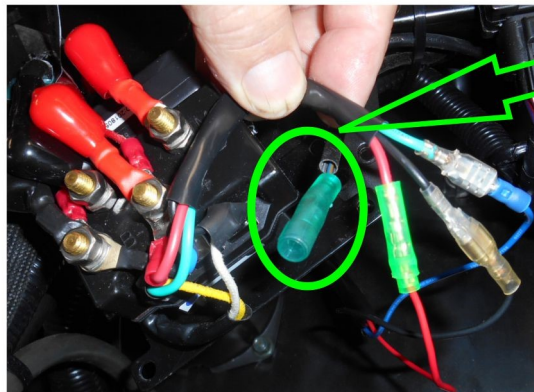
2. Remove 4 Bolts of Mount & Cover.



3. Remove 4 Bolt Covers, Switch 4 Wires Exactly in the Same Stud Location.



4. Remove 3 Small Wires from Old Conntactor.

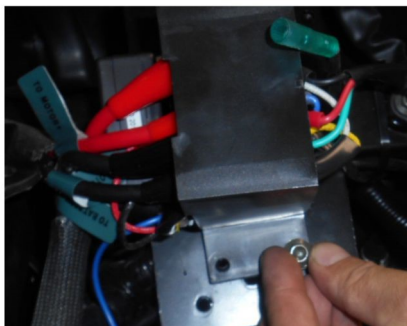


5. Reconnect, Red to Red. Black to Black, Blue to Green.

Please note, this Brown/Blue chaser Wire is Not Used.



6. Recover Stud Nuts.



7. Reinstall 4 Cover Bolts and Connect + to Battery.



Recognize the Wireless Remote Controls the Hand Held and Changes the Colors.

8. Slide Wireless Remote Up to the On Position. Press Upper Button.



9. Press Lower Button for Out Winch Line.