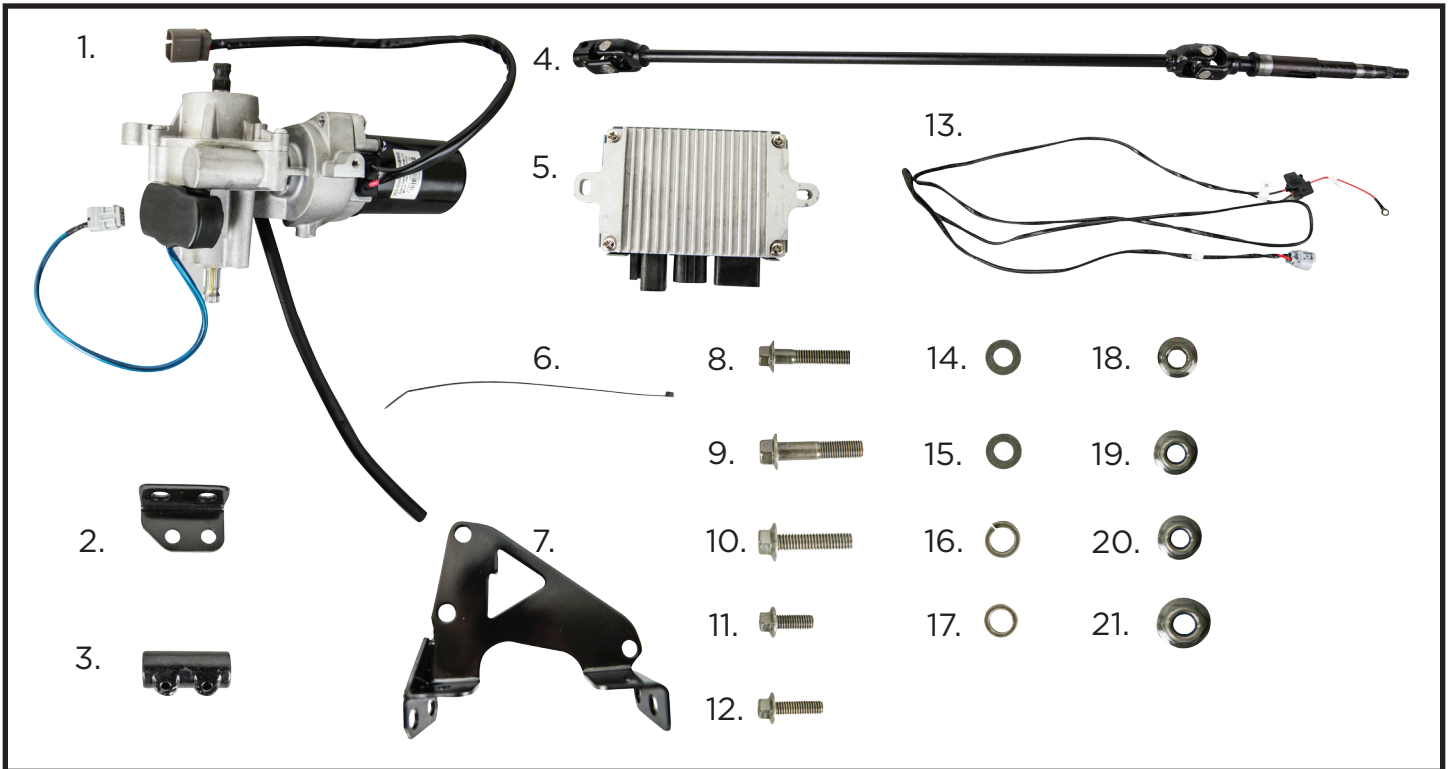


HSUN EPS ASSEMBLY

P/N : EPSSECTOR57K

BEFORE YOU BEGIN :

READ THESE INSTRUCTIONS AND CHECK TO BE SURE ALL PARTS AND TOOLS ARE ACCOUNTED FOR. PLEASE RETAIN THESE INSTALLATION INSTRUCTION FOR FUTURE REFERENCE AND PARTS ORDERING INFORMATION.



REF:	QTY:	PART DESCRIPTION:	P/N:
1.	1	EPS Assembly	
2.	2	EPS Mounting Plate 1	
3.	1	EPS Coupler	
4.	1	Steering Column	
5.	1	Module	
6.	10	Zip Ties	
7.	1	EPS Mounting Plate 2	
8.	4	Hex Flang Bolt M8	
9.	3	Hex Flange Bolt M10 x 1.25	
10.	2	Hex Flange Bolt M8 x 40	

REF:	QTY:	PART DESCRIPTION:	P/N:
11.	4	Hex Flange Bolt M8 x 20	
12.	2	Module Hex Bolt	
13.	1	Module Wires	
14.	8	Flat Washers	
15.	3	Flat Washer M10	
16.	8	Lock Washers	
17.	3	Lock Washers M10	
18.	2	Module Nuts	
19/20	8	Hex Flange Nuts	
21.	3	Hex Flange Nut	

TOOLS REQUIRED :

- SAFETY GLASSES
- PLIERS, PUSH PIN

- SOCKET SET, METRIC
- WRENCH SET , METRIC

- SCREWDRIVER
- UTILITY KNIFE

IMPORTANT :

STEP 1: BEFORE BEGINNING YOUR EPS ASSEMBLY, CHECK HARDWARE AND CONTENT.

INSTALLATION INSTRUCTIONS :

STEP 2: REMOVE HOOD.

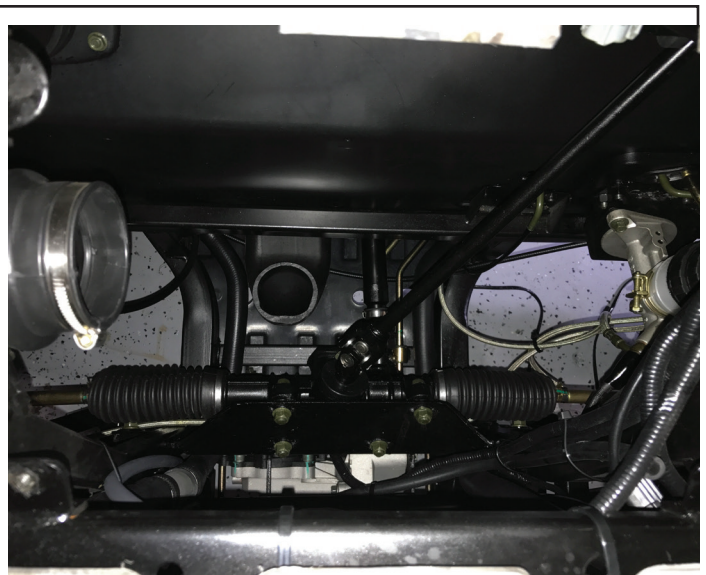


STEP 3: REMOVE AIR BOX, LOOSTEN BOTH INTAKE AND PLENOM TUBE CLAMPS, REMOVE FOUR AIR BOX MOUNTING SCREWS REMOVE AIR BOX. **(SEE EX. 1)**

STEP 4: REMOVE INTAKE PLENOM TUBE, LOOSEN CLAMP AT BASE OF PIPE, REMOVE INTAKE PLENOM PIPE. **(SEE EX. 2)**



EX. 1



EX. 2

INSTALLATION INSTRUCTIONS :

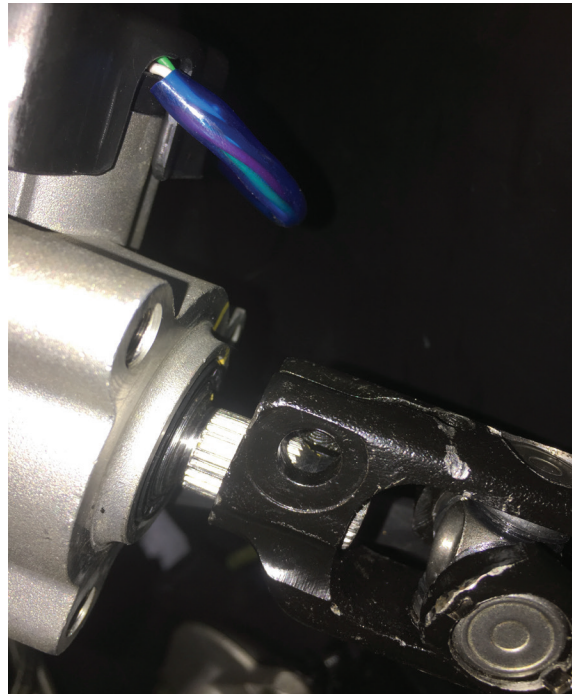
STEP 5: REMOVE FOUR PHILLIPS SCREWS THAT HOLD DOOR, REMOVE DOOR.

STEP 6: REMOVE DRIVERS SIDE LOWER SIDE PANEL ASM REMOVE BOLTS UNDER LEFT FRONT FENDER AROUND FRONT MUD FLAP, BOLTS IN STEP PANEL AND BOLTS IN REAR SEE IMAGE.



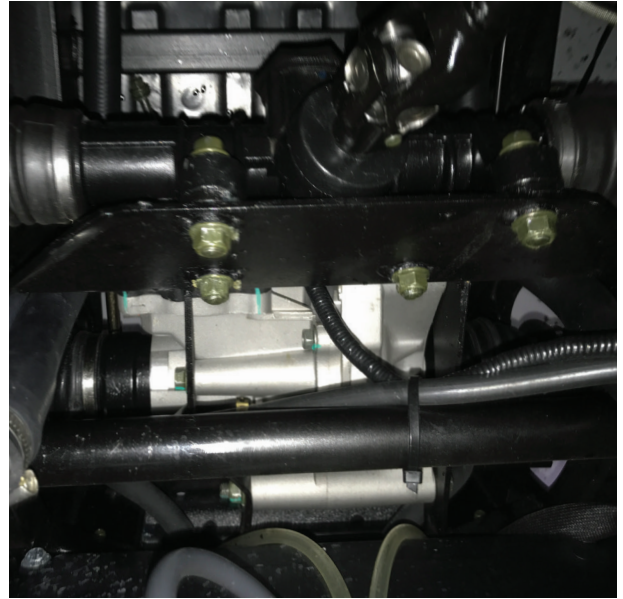
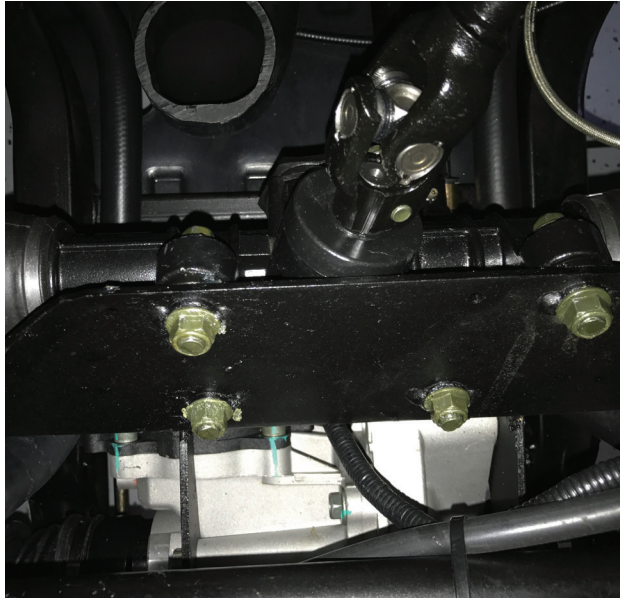
THIS IMAGE INCLUDES STEPS 5 AND 6

STEP 7: REMOVE BOLT FROM LOWER STEERING SHAFT MOUNTING POINT.



INSTALLATION INSTRUCTIONS :

STEP 8: REMOVE ALL FOUR RACK AND PINION MOUNTING BOLTS, DISCARD THREE AND REUSE ONE.



STEP 9: REMOVE LOWER SHAFT COUPLER BY LOWERING RACK TO REMOVE.



INSTALLATION INSTRUCTIONS :

STEP 10: REMOVE STEERING WHEEL ASM BY REMOVING 6 ALLEN SCREWS. NOTE BE CAREFUL WHEN DISCONNECTING THE HORN PAD, TO PREVENT DAMAGE.



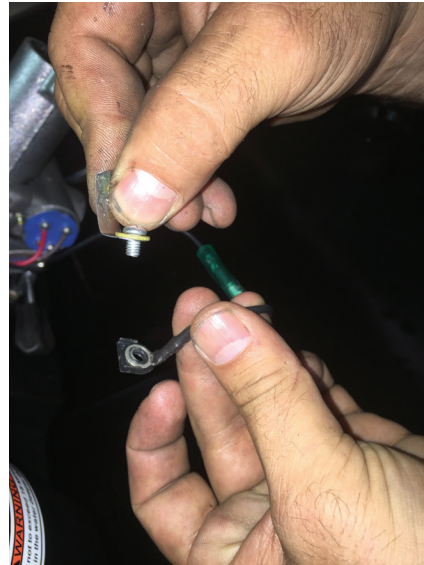
STEP 11: REMOVE STEERING SHROUD FROM COLUMN BY REMOVING TWO PHILLIPS SCREWS ON EACH SIDE AND TWO ALLEN BOLTS THAT HOLD SHROUD TO COLUMN

STEP 12: REMOVE STEERING WHEEL MOUNT BY REMOVING STEERING SHAFT NUT. NOTES THREAD THE NUT BACK ONTO THE SHAFT, BEING CAREFUL TO STOP THREADING THE NUT SO THAT IT IS HIGHER THAN THE SHAFT. LIGHTLY TAP THE NUT TO LOOSEN THE MOUNT. REMOVE THE NUT REMOVE THE STEERING WHEEL MOUNT.



INSTALLATION INSTRUCTIONS :

STEP 13: REMOVE THE HORN COMPONENTS IN ORDER. NOTE, BE AWARE WHEN UNBOLTING THE HORN CONNECTOR. THERE IS A SPECIFIC ORDER TO THE INSTALL.



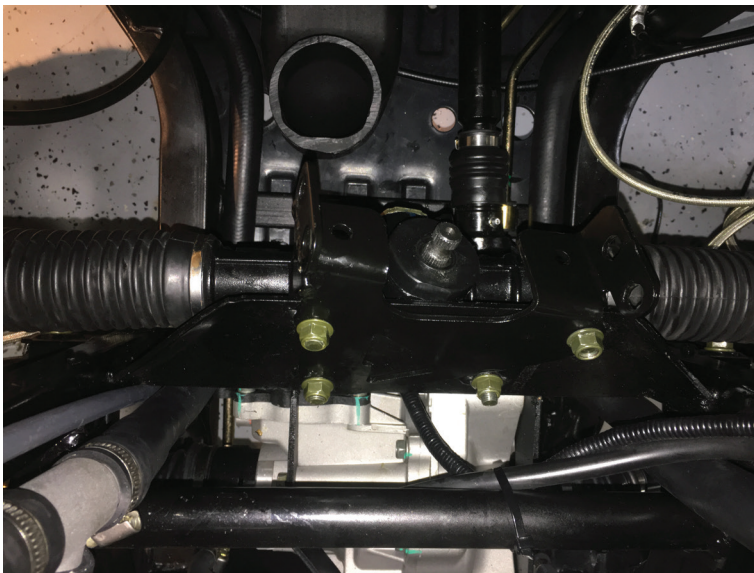
STEP 14: REMOVE STEERING SHAFT SNAP RING.

STEP 15: REMOVE THE STEERING SHAFT FROM THE COLUMN. NOTE THREAD THE STEERING SHAFT, MAKING THREAD NUT BACK ONTO SHAFT, BEING CAREFUL TO STOP THREADING THE NUT SO THAT IT IS HIGHER THAN THE SHAFT. LIGHTLY TAP THE NUT TO REMOVE SHAFT FROM BEARINGS.

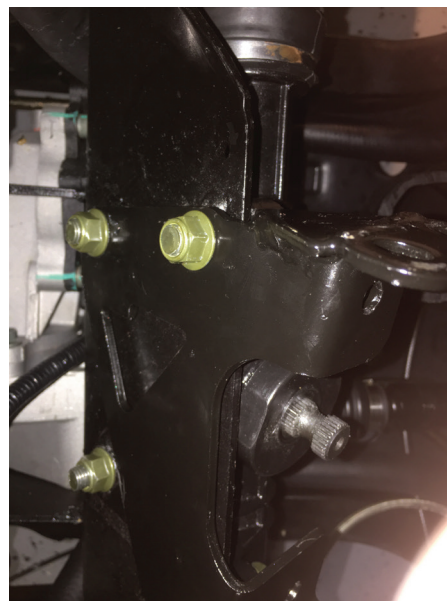
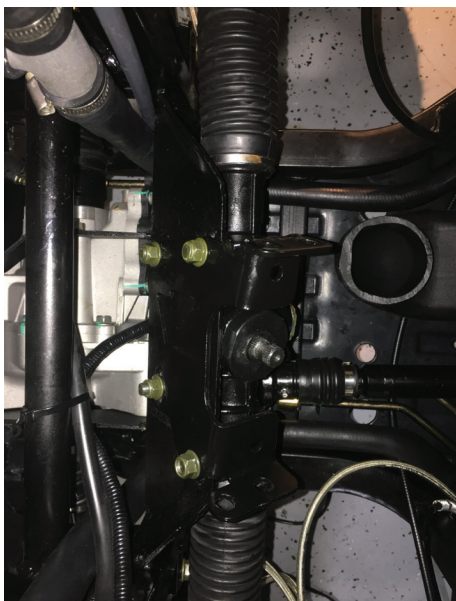


INSTALLATION INSTRUCTIONS :

STEP 16: REMOVE STEERING SHAFT. PULL PIVOT SHOCK UPPER PIN TO ALLOW EXTENDED MOVEMENT TO REMOVE SHAFT. POSSIBILITY A SECOND PERSON MIGHT BE NEEDED TO REMOVE SHAFT. HAVE A PERSON OUTSIDE GUIDING THE STEERING SHAFT, WHILE LIGHTLY PUSHING THE COLUMN TOWARDS THE DASH TO ALLOW STEERING SHAFT REMOVAL. DISCARD SHAFT.

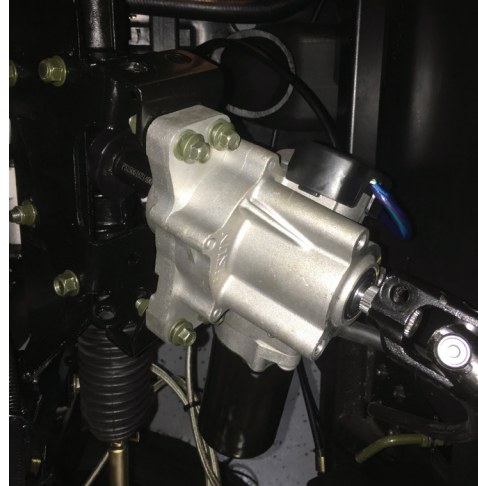
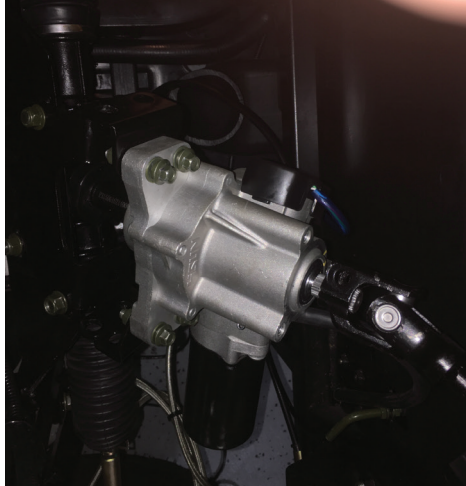


STEP 17: INSTALL POWER STEERING BRACKET TO FRAME, MOUNTING THE STEERING GEAR WITH THREE NEW BOLT SETS AND REUSE ONE OF THE BOLT SETS REMOVED PREVIOUSLY. LEAVING ALL BOLT SET LOOSE



INSTALLATION INSTRUCTIONS :

STEP 18: MOUNT BRACKET PER IMAGE TO POWERSTEERING MOTOR ASSEMBLY USING HARDWARE PROVIDED, NOT E LEAVE BOLTS SETS LOOSE.



STEP 19: INSTALL THE NEW STEERING SHAFT, LIGHTLY TAPPING LOWER END OF SHAFT TO COMPLETELY INSTALL STEERING SHAFT INTO STEERING COLUMN. INSTALL SNAP RING ONTO TOP SHAFT.

STEP 20: REINSTALL HORN CONTACT AND SPRING, NOTE MAKE SURE OF PROPER INSTALL ORDER ON HORN CONTACT SCREW.



INSTALLATION INSTRUCTIONS :

STEP 21: INSTALL STEERING WHEEL MOUNT, ALIGN CHECK POINT. A HOLE SHOULD BE STRAIGHT UP CENTERED AT THE TOP OF THE MOUNT WITH WHEELS STRAIGHT. INSTALL NUT AND TIGHTEN.

STEP 22: INSTALL.

STEP 23: INSTALL STEERING COLUMN SCROUD, NOTE TWO PHILLIPS SCREWS AND TWO ALLEN BOLTS



STEP 24: LOOSELY INSTALL LOWER COUPLER ONTO POWER STEERING MOTOR ASSEMBLY, MAKING SURE COUPLER IS ALIGNED IN CORRECT POSITION TO INSTALL LOCKING BOLT.

STEP 25: LOOSELYY INSTALL POWER STEERING MOTOR, NOTE INSTALL STEERING SHAFT COUPLER JOINT ONTO TOP OF POWER STEERING MOTOR ASSEMBLY AND THEN ALIGN AND INSTALL ONTO STEERING GEAR ASSEMBLY. INSTALL BOLT, NOTE MAKING SURE THE BOLT IS INSTALLED IN THE GROOVE OF THE SHAFT. DO NOT TIGHTEN.



INSTALLATION INSTRUCTIONS :

STEP 26: TIGHTEN BOLTS IN THIS ORDER: POWER STEERING BRACKETS TO STEERING GEAR BRACKET, BRACKET TO POWER STEERING MOTOR, RACK ASSEMBLY MOUNTING BOLTS, UPPER STEERING SHAFT COUPLER BOLT, LOWER MOTOR TO RACK CONNECTION.

STEP 27: INSTALL MODULE ON FIREWALL, NOTE DRILL TWO ¼ HOLES IN FIRE WALL USING THE MODULE AS A TEMPLATE. MOUNT POWER STEERING MODULE.



STEP 28: PLUG IN HARNESS, CONNECTORS AND TIED TO THE HARNESS, ZIP TIED TO THE FRAME. PLUG IN THE LARGER CONNECTOR INTO THE MODULE AND PLUG IN THE HARNESS FROM THE POWERSTEERING MOTOR AND CONNECT TO SMALLER CONNECTOR FROM THE MAIN HARNESS.

STEP 29: PLUG IN THE POWER HARNESS TO THE MODULE AND REFER TO IMAGE ON ROUTING OF HARNESS



INSTALLATION INSTRUCTIONS :

STEP 30: ROUTE PER IMAGE, RUN BEHIND STEERING SHAFT TOWARDS THE DRIVER-SIDE OF THE UNIT AND FOLLOW THE MAIN HARNESS TO THE BATTERY TRAY, NOTE: PLACE A ZIP TIE EVERY SIX INCHES TO MAIN HARNESS.



STEP 31: CONNECT POWER WIRES, FIRST ONE TO MATING CONNECTOR IN BATTERY BOX, CONNECT POWER WIRE TO POSITIVE BATTERY POST. POWER UNIT UP AND TEST POWERSTEERING.

STEP 32: IF ALL WORKS PROPERLY REASSEMBLE SIDE OF UNIT AND CHECK OVER COMPLETE INSTALLATION, TO ASSURE ALL BOLTS ARE TIGHT, HORN WORKS, AND TEST DRIVE.

